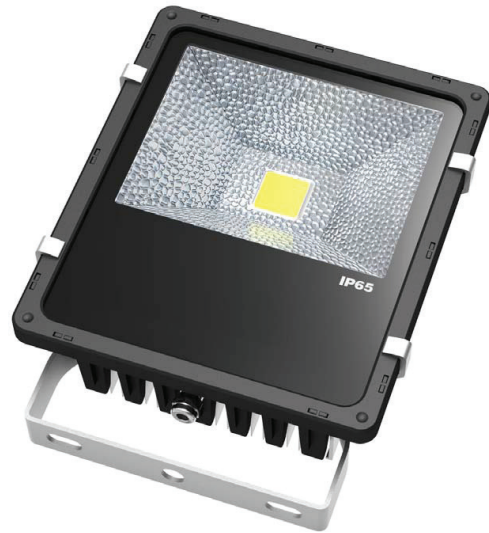


## Qlamp LED Flood Light 50W

Q-FL50050



### DESCRIPTION:

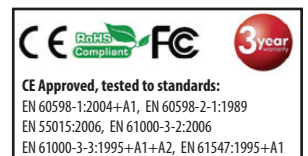
- Environment protection: Adopting cold light source, no radiation and heavy metal pollution.
- Saving electricity up to 50% compared to different with traditional Flood Light.
- Adopting integrated Chip as light source with high lighting efficiency (80-100LM/W), high CRI(Ra>75), good quality heat dissipation, low light degradation.
- Aluminum alloy die cast housing, good strength, high quality heat dissipation. anti corrosion and baking varnish surface, can be for outdoor using.
- Multi-functional adjustable fixation bracket precisely and effectively adjusts for illuminant angle of light fixture.
- Special circuit design, each LED work separately, avoiding the single broken LED influence problem.
- No RF interference & electric wave resistant.
- Ingenious design, can replace light source.
- Supply electricity by using low voltage and direct current, gives high safety factor, suitable for lighting in outlying area and the wild.
- Built-in high efficiency constant current driver, Wide Voltage AC100-240V 50/60Hz input, worldwide application.
- Longer Lifetime of 30000~50000 hrs

### APPLICATION:



Widely used in billboards, highways, railway tunnels, bridges, squares, stadiums, trees, parking lots, building walls, hotel, factories, commercial lighting, shopping malls, supermarkets, display, backlight and so on.

TECHNICAL SPECIFICATION	
Model No.	Q-FL50050
Input Voltage	AC85-265V 50/60Hz
Dimension	L291*W250*H116
Lighting Source	1*50W Bridgelux Chip
Power Consumption	50W
CRI (Ra)	>75
Luminaire Efficiency	>85lm/W
Color Temperature	WW(2800~3300K)
	NW(4000~4500K)
	CW(6000~7000K)
Luminosity	≥ 4500lm
	≥ 4620lm
	≥ 4750lm
Beam Angle	120°
Work Temperature	-25°C~+45°C
Material	Alu+Glass
GW	5.5kg
NW	4.5kg
Power Factor	≥ 0.9
IP Rating	IP65
Lifespan (LED)	≥ 50,000hrs
Lumen Attenuation	<5% @ 5,000hrs
Packing Dimension	370*W330*H170mm



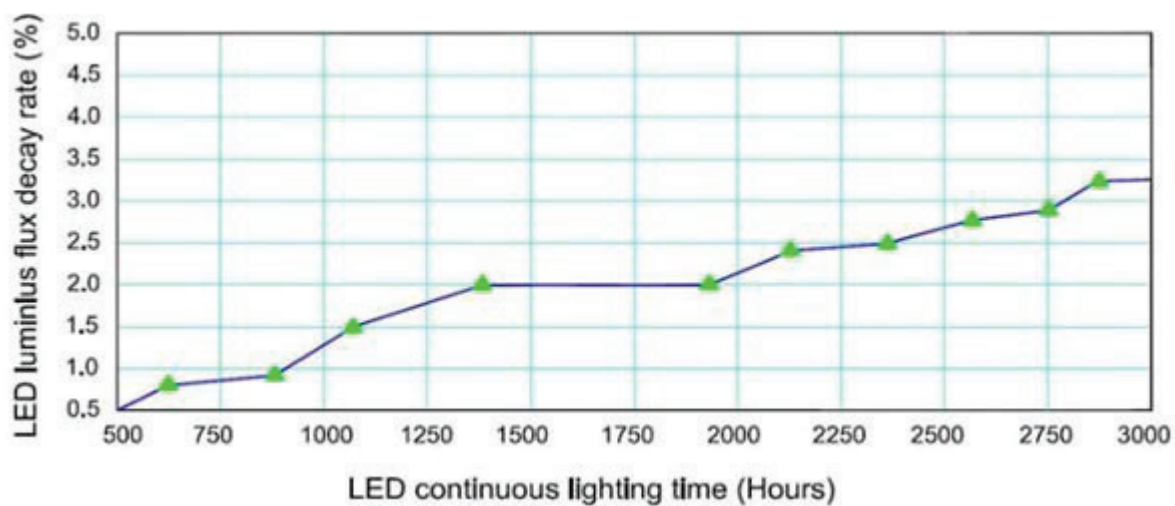
POWERSAVE SOLUTIONS LTD

HEAD OFFICE: Unit 7, The Sandon Estate, Sandon Way, Liverpool L5, 9YN

LONDON OFFICE: 17 Highgate Hill, Hill House - 9th Floor, N19 5NA

e-mail: info@powersavesolutions.co.uk facebook.com/powersavesolutions www.powersavesolutions.co.uk

DIAGRAM OF DEGRADATION FOR LUMINOUS:



DIMENSION

