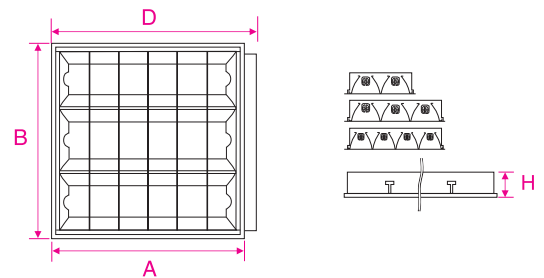
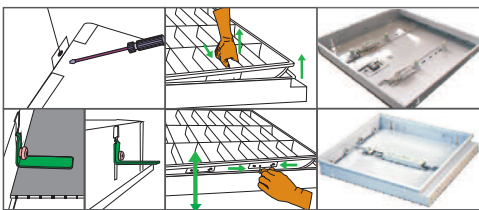




SPECIFICATIONS:

- Housing: 0.6-1mm cold rolled steel sheet. Surface treatment adopts multi steps processing such as degreasing, surface conditioning, phosphating, rinsing, static spraying with anti-UV powder and 180-210°C high temperature curing, to form the smooth, elegant and durable surface. It is corrosion resistant and not easy to discolor.
- Reflector: Alanod anodized aluminum in Specular 320G or Matt 1100G (thickness of 0.4mm), or higher level Miro4 Silver, Miro5 Silver, Miro6 Silver, Miro7 Silver, Miro8 Silver. Louver scientifically designed, provides excellent lighting without glare. Reflectivity of the grating is up to 85%-95%, high efficiency.
- Advantages: excellent design, the simple and elegant appearance reflects the market trend and provides fashionable, comfortable and gentle lighting performance.
- Accessories: A.A.G. Stucchi, Vossloh or VDE approved lamp holder; A.A.G. Stucchi, Tridonic or VDE approved terminal block; 0.75 mm² heat resistant 105°C UL or VDE approved wire; 1.2m-2.6m VDE approved or SAA approved cable plug are all available to supply. All comply with requirements of IEC standards and RoHS directives.
- Ballast: Osram, Philips, Tridonic, Helvar DALI Ballast: Philips, Tridonic or Helvar.
- Emergency kits: Tridonic(3 hours).
- Lamp: Philips, Osram (3000K/4000K/6000K).



Product Code	Model	Body material	Lamp	Lamp holder	Dimension(mm)		MEAS(mm) 1PCS
					AXBXH	D	
L618000001	Q-T218I	0.6mm steel	2X18W	G13	595X295X85	628	636X310X93
★ L618000002	Q-T318I	0.6mm steel	3X18W	G13	595X595X85	628	636X610X93
★ L618000003	Q-T418I	0.6mm steel	4X18W	G13	595X595X85	628	636X610X93
L618000004	Q-T236I	0.6mm steel	1/2X36W	G13	1195X295X85	1228	1243X325X100
L618000005	Q-T336I	0.6mm steel	3X36W	G13	1195X595X85	1228	1243X625X100
L618000006	Q-T436I	0.6mm steel	4X36W	G13	1195X595X85	1228	1243X625X100
L618000008	Q-T258I	0.6mm steel	2X58W	G13	1495X295X85	1528	1543X325X100
L608000010	Q-T458I	0.6mm steel	4X58W	G13	1495X595X85	1528	1543X625X100